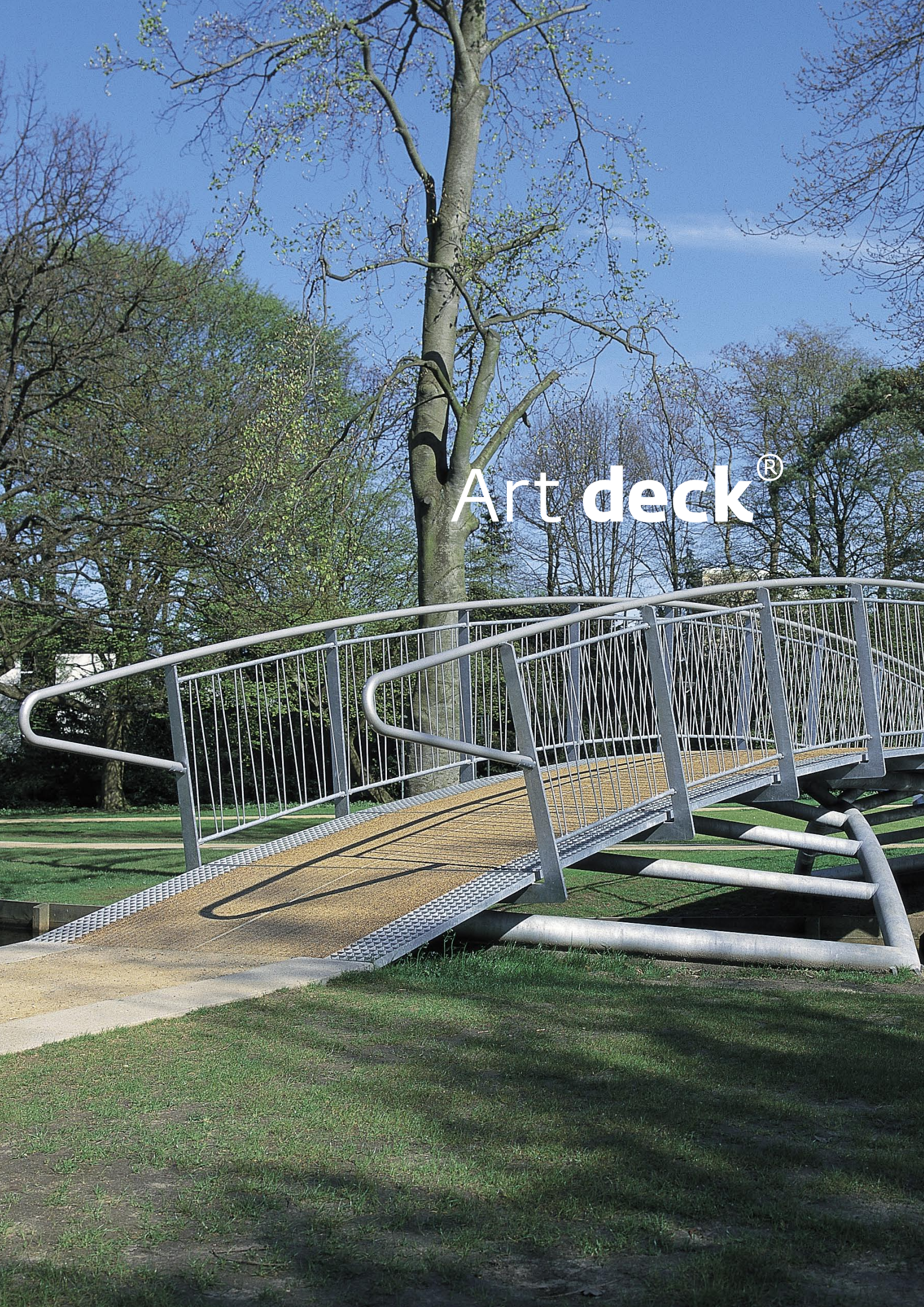


Art deck®



Artdeck®. A safe, colourful and durable solution for bridges, stairs or walkways.

What is Artdeck®? Under the name of Artdeck® BRS offers a patented product where grids are entirely or partly filled with EPDM or tire granule. Artdeck® allows the production of porous, self-supporting and passable surfaces that give people with fear of heights a safe feeling. Recently Artdeck® 'Drain Controlled' has become available, also a patented product, that catches rainwater.

Product qualities Steel grids soon become slippery in our climate, whether they are profiled or not. Artdeck® remains rough and is therefore safer. Filling the openings in the grids with granulated car tires or EPDM creates the surface that is so typical of Artdeck®. Besides black tire granule Artdeck® is also available in many colours and colour mixtures of EPDM synthetic granule. It is also possible to fill the grids with glass grains or gravel!

Applications Artdeck® can be applied on stairs, loading platforms, roadways or walkways. The surfaces are suitable for pedestrians and bicycles, but with the right type of grids heavier loads are possible. BRS can of course also deliver entire stairways or bridges!

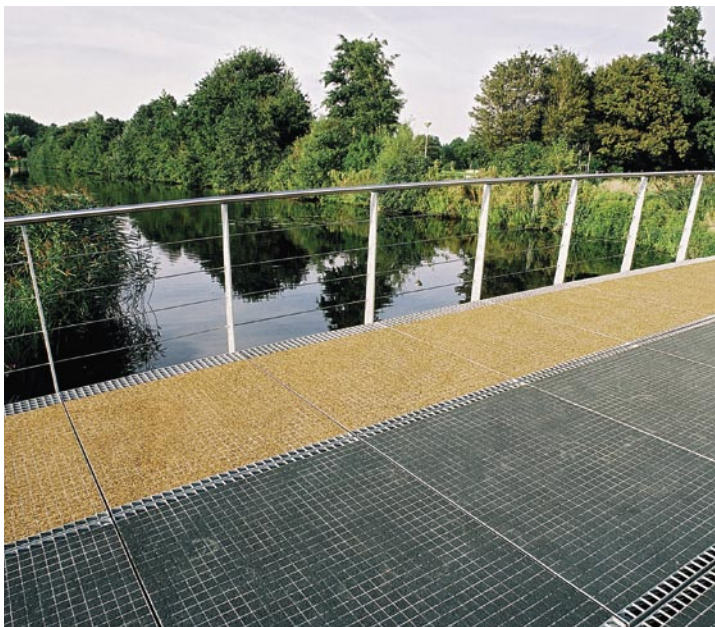
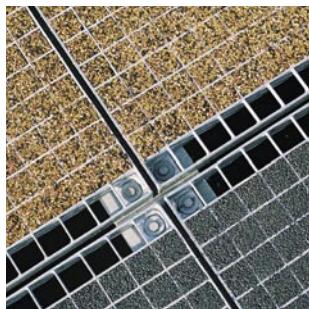
Environment and sound Because the product has a long life span and the costs of maintenance are low, Artdeck® is an ecologically sound solution. It is expected that clean tire granule will become available in due time. Apart from the known qualities of Artdeck® this material has vibration isolating and contact sound insulating qualities.

Mounting In principle all grids available on the market can be filled with Artdeck®. The same allowable loads apply as for grids and stairs without granule. You have to take into account a mere added weight of approx. 10-15 kg per m².

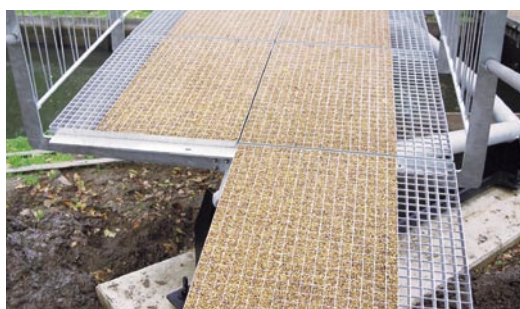
For more information:

www.artdeck.nl or www.brs.nl





► Various projects such as 5 bridges in Huizen and bridges in Amsterdam and Osdorp are equipped with Artdeck®. The illustration shows the bridge in Osdorp.



◄ **Granule.** The granule is available in many colours, and produces a 'through and through' surface. A slight discolouration caused by UV rays is possible. The granule is flame proof and, if necessary, can be cleaned under high pressure.

Running surface	Synthetic granule	Tire granule
Material	EPDM	Granulated car tires
Surface structure	natural (not sanded)	Natural (not sanded)
Hardness	70 shore A	60-70 shore A
Surface roughness FSC 2000	Sufficient - very good	Sufficient - very good
Fire classification NEN 1775	T2	T2
Allowable temperature	-25/+80 degrees Celsius	-25/+80 degrees Celsius
Salt resistance	Good	Good

Technical changes reserved.